

INFO



SMN 3

Groz-Beckert KG · Postfach/P.O. Box 10 02 49 · D-72423 Albstadt · Germany
Tel. (0 74 31) 10-0 · Fax (0 74 31) 10-32 00 / 27 77 · e-mail: s-vn@groz-beckert.com
<http://www.groz-beckert.com>

BUTTON SEWING WITH GROZ-BECKERT NEEDLES

The semi or fully automatic function of button sewing machines places rather extreme demands on the sewing machine needle. The needle has to guide the sewing thread through the holes of the button and into a penetration hole

which becomes tighter with every stitch. Whenever the needle hits the edge of the button, it has to be flexed into the hole at that very instant. If this does not happen certain problems will result:



Frequent problems



1 The button can be damaged.



2 The needle can bend and break.



3 The fabric can be damaged.

BUTTON SEWING NEEDLES OF GROZ-BECKERT AND THEIR ADVANTAGES
**TRADITIONAL
BUTTON SEWING
NEEDLES ...**

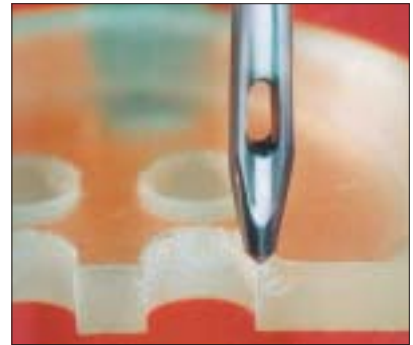
... are equipped with sharp points with extremely blunt angles.

Common point designations:
Stu, Stub, H Set, EH Set etc.

When they hit the edge of a button, such needles produce an indentation which in turn acts as a fixture for the needle (Fig. 4). As a consequence the edge may break out (Fig. 5) or the button bursts (Fig. 1). Alternatively, the needle will bend under the buckling load (Fig. 6). It gets crooked and it will break either immediately or during the next needle bar stroke (Fig. 7).



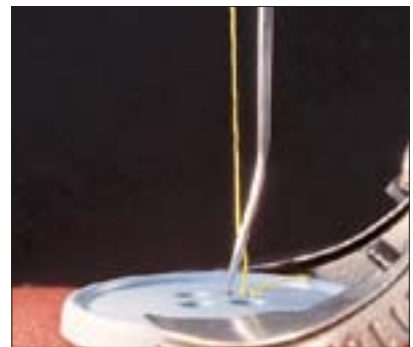
4



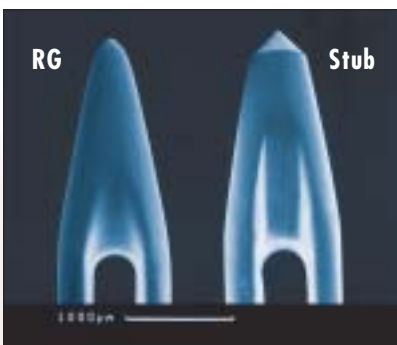
5



6



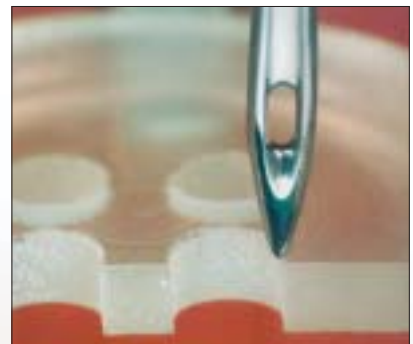
7



8



9



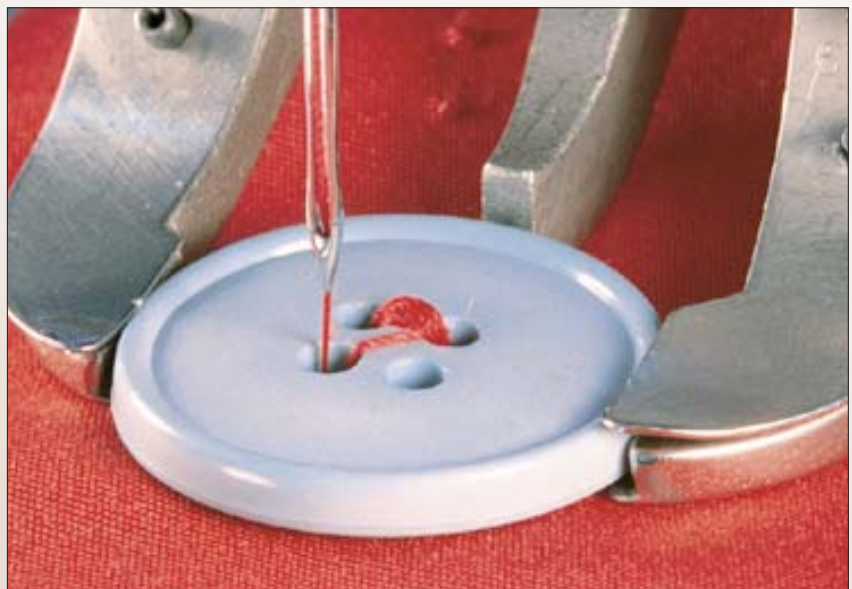
10

**BUTTON SEWING
NEEDLES OF
GROZ-BECKERT ...**

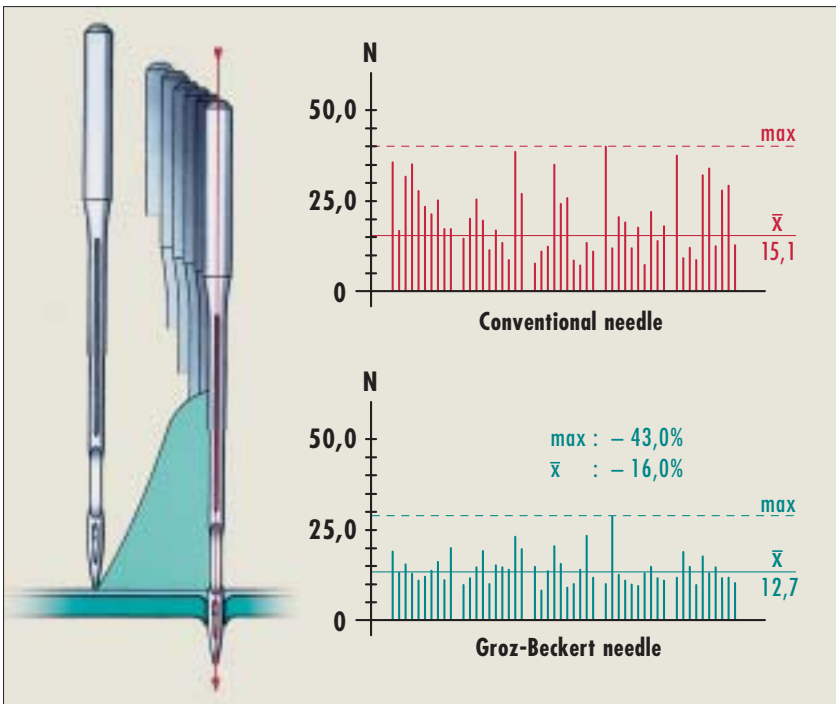
... are equipped with a variation of the RG point for this very reason (Fig. 8). Owing to its particular geometry, this slim point avoids any surface marking when it strikes the button (Fig. 9). The needle flexes easily into the hole of the button (Fig. 10). The occurrence of damage to the button is almost eliminated. The needle is protected against overloading and the problem of needle breakage is greatly reduced.

Results:

- Proper function of needle and machine (Fig. 11)
- Diminished machine downtime
- Improved button sewing quality



11



12

LOW PENETRATION RESISTANCE

The penetration resistance is reduced up to about 43% due to the very specific shape of button sewing needles made by Groz-Beckert. As a result, the needle has to cope with lower forces and the fabric is handled gently. The sewing thread is guided through the button and the fabric with low friction applied. Predamage to the thread is avoided and stable button sewing is produced.

Comparison:

Penetration forces (50 penetrations)
Needle class 2091 size 110 on 2 plies of denim.



13

RG-POINT

Special point styles like FFG or FG are no longer required for the processing of knit fabric. The RG point, with its basically ball-shaped tip, has particularly proven itself superior in knits.

SUITABLE FOR SEWING LABELS AND BAR TACKING

Even when button sewing machines are used for label or dot bar tacking operations there is no longer a need for sharp (R/RS) needle points. The advantage of the low friction penetration of the RG point again proves its benefits.



14

The advantages

- Low forces during penetration take away the load edge on fabric and needle.
- The problem of choosing a wrong point style for the different fabrics is eliminated.
- Needle wear and usage is reduced.
- Stock keeping is simplified and the cost is reduced because the standard button-sewing needle of Groz-Beckert takes care of all the application variety.

GROZ-BECKERT
 – that subtle difference.

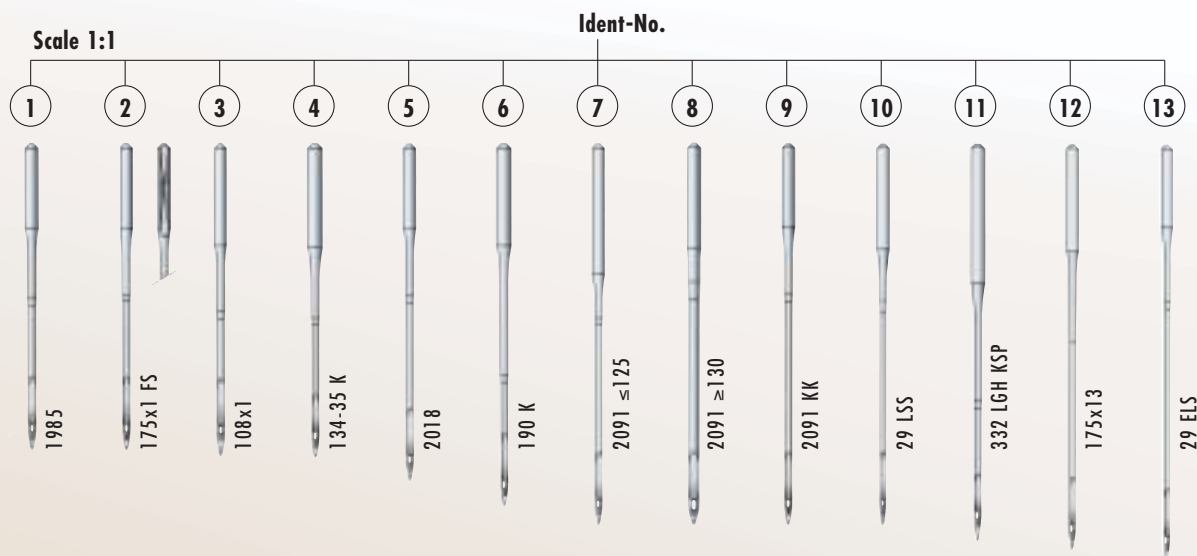
GROZ-BECKERT®

PROGRAM BUTTON SEWING NEEDLES:

System	Size-Range	Ident-No.	GB-designation
29 ELS	100 - 130	13	517.174 AC01 RG
29 L	60 - 125	7	470.174 AC01 RG
29 L	130 - 150	8	470.174 AC01 RG
29 LES	60 - 150	9	470.174 AC02 RG
29 LSS	60 - 125	10	470.174 AC03 RG
29 LSS	130 - 150	8	470.174 AC01 RG
29 S	60 - 150	1	371.174 AC01 RG
108 x 1	60 - 140	3	373.163 AC02 RG
108 x 3 FFG	60 - 140	3	373.163 AC02 RG
134 - 35 K	50 - 200	4	381.200 AC02 RG
175 x 1	60 - 150	1	371.174 AC01 RG
175 x 1 FR	60 - 150	2	371.174 AC02 RG
175 x 1 FS	60 - 150	2	371.174 AC02 RG
175 x 3	60 - 150	5	412.174 AC01 RG
175 x 5	60 - 150	1	371.174 AC01 RG
175 x 7	60 - 125	7	470.174 AC01 RG
175 x 7 KK	60 - 150	9	470.174 AC02 RG
175 x 9	60 - 125	10	470.174 AC03 RG
175 x 9	130 - 150	8	470.174 AC01 RG
175 x 13	100 - 140	12	502.174 AC01 RG
175 x 15	60 - 125	7	470.174 AC01 RG
175 x 15	130 - 150	8	470.174 AC01 RG
175 x 25	100 - 140	12	502.174 AC01 RG
175 x 31	60 - 150	5	412.174 AC01 RG
175 x 33	60 - 150	5	412.174 AC01 RG
178 H	60 - 150	5	412.174 AC01 RG
190 K	60 - 140	6	445.200 AC02 RG
332 LGH KSP	90 - 140	11	485.198 AC02 RG
1661	60 - 150	1	371.174 AC01 RG
1661 ELG	60 - 125	10	470.174 AC03 RG
1661 ELG	130 - 150	8	470.174 AC01 RG

System	Size-Range	Ident-No.	GB-designation
1661 EXT LG	60 - 125	10	470.174 AC03 RG
1661 EXT LG	130 - 150	8	470.174 AC01 RG
1661 LG	60 - 150	5	412.174 AC01 RG
1661 M	60 - 150	1	371.174 AC01 RG
1985	60 - 150	1	371.174 AC01 RG
1985 SAN® 1	60 - 150	2	371.174 AC02 RG
1986	60 - 150	5	412.174 AC01 RG
1987	60 - 125	10	470.174 AC03 RG
2018	60 - 150	5	412.174 AC01 RG
2091	60 - 125	7	470.174 AC01 RG
2091	130 - 150	8	470.174 AC01 RG
2091 K	60 - 125	7	470.174 AC01 RG
2091 K	130 - 150	8	470.174 AC01 RG
2091 KK	60 - 150	9	470.174 AC02 RG
2091 LGK	60 - 125	7	470.174 AC01 RG
2091 LGK	130 - 150	8	470.174 AC01 RG
2134 - 35 K	50 - 200	4	381.200 AC02 RG
SY 2851	60 - 150	1	371.174 AC01 RG
SY 2852	60 - 150	1	371.174 AC01 RG
SY 3049	60 - 140	3	373.163 AC02 RG
SY 4051	60 - 150	5	412.174 AC01 RG
SY 4052	60 - 150	5	412.174 AC01 RG
SY 4531	60 - 125	7	470.174 AC01 RG
SY 4531	130 - 150	8	470.174 AC01 RG
SY 4533	60 - 125	10	470.174 AC03 RG
SY 4533	130 - 150	8	470.174 AC01 RG
SY 4536	60 - 125	7	470.174 AC01 RG
SY 4536	130 - 150	8	470.174 AC01 RG
SY 4538	60 - 125	10	470.174 AC03 RG
SY 4538	130 - 150	8	470.174 AC01 RG
SY 4539	60 - 125	7	470.174 AC01 RG

System	Size-Range	Ident-No.	GB-designation
SY 4539	130 - 150	8	470.174 AC01 RG
SY 4631	100 - 140	12	502.174 AC01 RG
SY 4632	100 - 140	12	502.174 AC01 RG
SY 7226	50 - 200	4	381.200 AC02 RG
SY 7585	60 - 150	9	470.174 AC02 RG
SY 7586	60 - 150	9	470.174 AC02 RG
SY 7587	60 - 150	9	470.174 AC02 RG
SY 7700	100 - 130	13	517.174 AC01 RG
SY 8138	60 - 150	5	412.174 AC01 RG
SY 8661	60 - 150	5	412.174 AC01 RG
SY 8662	60 - 150	5	412.174 AC01 RG
SY 8701	50 - 200	4	381.200 AC02 RG
SY 8724	60 - 150	1	371.174 AC01 RG
SY 8727	60 - 150	5	412.174 AC01 RG
SY 8728	60 - 125	7	470.174 AC01 RG
SY 8728	130 - 150	8	470.174 AC01 RG
BQ x 1	60 - 140	3	373.163 AC02 RG
DP x 35 K	50 - 200	4	381.200 AC02 RG
LS x 18	60 - 125	10	470.174 AC03 RG
LS x 18	130 - 150	8	470.174 AC01 RG
MT x 190 K	60 - 140	6	445.200 AC02 RG
TQ x 1	60 - 150	1	371.174 AC01 RG
TQ x 3	60 - 150	5	412.174 AC01 RG
TQ x 5	60 - 150	1	371.174 AC01 RG
TQ x 7	60 - 125	7	470.174 AC01 RG
TQ x 7	130 - 150	8	470.174 AC01 RG
TQ x 9	60 - 125	10	470.174 AC03 RG
TQ x 9	130 - 150	8	470.174 AC01 RG
TQ x 13	100 - 140	12	502.174 AC01 RG
TQ x 14 N	60 - 150	9	470.174 AC02 RG



You can get our needles from: